



# **ARTISAN TABLE-MOUNTED RETRACTOR**



**Comparable to:  
Codman Bookwalter**

**GENERAL  
UROLOGY  
PEDIATRIC**

**VAGINAL  
BARIATRIC  
RECTAL**



**Artisan Medical • 617 Stokes Road • Suite 4-306 • Medford, NJ 08055  
ph: 866.930.3390 • fax: 609.939.0959**

**[www.artisanmed.com](http://www.artisanmed.com)**

# ASSEMBLY COMPONENTS

## RINGS



Round Segment Ring



Oval Rings



Oval Segmented Rings



Ring Extensions

<b>SIZE</b>	<b>DIMENSION</b>	<b>PROD NO.</b>
Round Ring, Small	8.5" I.D.	AMB716A
Round Ring, Medium	10.5" I.D.	AMB716B
Round Ring, Large	12.5" I.D.	AMB716C
Oval Ring, Small	13.5" x 8.5"	AMB716
Oval Ring, Medium	14.5" x 10.5"	AMB717
Oval Ring, Large	18.5" x 12.0"	AMB718
Segmented Ring, Medium	19.5" x 10.5"	AMB731
Segmented Ring, Oval, Large	12.0" D Oval, 6" Segment	AMB803A
Segmented Ring, Oval, Medium	10.0" D Oval, 8" Segment	AMB803B
Segmented Ring, Oval, Small	8.0" D Oval, 4" Segment	AMB803C
Segmented Ring, Round, Large	12.0"	AMB803D
Segmented Ring, Round, Medium	10.0"	AMB803E
Segmented Ring, Round, Small	8.0"	AMB803F
Vaginal Retractor Ring	8.0" x 10.5"	AMB917
Jordan-Simpson Retractor Ring, Segmented, Slotted	8.5" I.D.	AMB861
Straight Segmented/Extension	4" (pair)	AMB803G
Straight Segmented/Extension	6" (pair)	AMB803H
Straight Segmented/Extension	8" (pair)	AMB803I

## TABLE MOUNTING COMPONENTS

**DESCRIPTION**

**(Width x Length)**

<b>DESCRIPTION</b>	<b>PROD NO.</b>
1" Post Coupler	AMB715
Table Post 1", Length: 18"	AMB711
Table Post 1", Length: 24"	AMB711XL
Extension Bar (30.5cm/12")	AMB747
Horizontal Bar	AMB713
Horizontal Flex Bar	AMB741

**Ratchet Mechanisms**

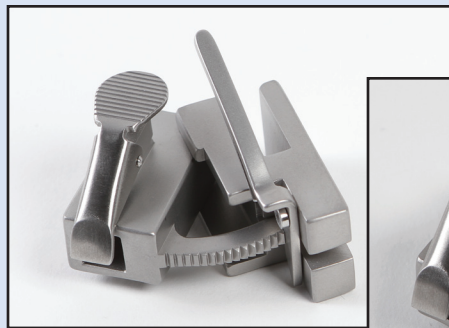
Fixed Ratchet Mechanism	AMB727
Tilt Ratchet Mechanism	AMB729



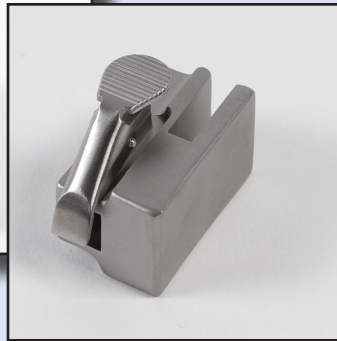
*Post Coupling*



*Horizontal Flex Bar*



*Tilt Ratchet Mechanism*



*Ratchet Mechanism*



*Table Post*



## RETRACTOR BLADES

### KELLY RETRACTORS



*Kelly Retractor Blades*

<b>DESCRIPTION (Width x Length)</b>	<b>PROD NO.</b>
Kelly Retractor 1" x 1.5"	AMB720
Kelly Retractor 2" x 3"	AMB721
Kelly Retractor 2" x 4"	AMB723
Kelly Retractor 2" x 5"	AMB737
Kelly Retractor 3" x 2 5/8"	AMB738
Kelly Retractor 2" x 6"	AMB739
Kelly Retractor 2 5/8" x 3"	AMB740
Kelly Retractor 1" x 2.5"	AMB742
Kelly Retractor 2" x 7"	AMB745
Kelly Retractor 2.5" X 3"	AMB834
Kelly Retractor 2" x 2"	AMB834A
Kelly Retractor 2.5" x 7"	AMB835
Kelly Retractor 2.5" x 8"	AMB836
Kelly Retractor 2" x 8"	AMB836A
Kelly Retractor 2.5" x 10"	AMB837
J-R-S Retractor .75" x 1"	AMB877
J-R-S Retractor .75" x 2"	AMB878
J-R-S Retractor 1" x 1.25"	AMB879



[www.artisanmed.com](http://www.artisanmed.com)

## RETRACTOR BLADES



*Malleable Retractors Blades*  
All retractors come with protective edges



*Harrington Retractor Blades*

<u>DESCRIPTION (Width x Length)</u>	<u>PROD NO.</u>
Harrington Retractor 2 1/2" x 5 1/4"	AMB743
Baby Harrington Retractor 1 1/2" x 5"	AMB825
Harrington Retractor 2 1/2" x 9"	AMB826
Harrington Retractor 3 1/2" x 10"	AMB826A

<u>DESCRIPTION (Width x Length)</u>	<u>PROD NO.</u>
Malleable Retractor 2" x 6"	AMB719
Malleable Retractor 1 1/2" x 6"	AMB733
Malleable Retractor 3" x 6"	AMB735
Malleable Retractor 1.5" x 4"	AMB805
Malleable Retractor 1/2" x 3"	AMB809
Malleable Retractor 1" x 4"	AMB810
Malleable Retractor 1" x 5"	AMB811
Malleable Retractor 1" x 6"	AMB812
Malleable Retractor 6" x 12 "	AMB813
Malleable Retractor 1" x 9"	AMB814
Malleable Retractor 2" x 7"	AMB815
Malleable Retractor 2" x 9"	AMB816
Malleable Retractor 2" x 10"	AMB817
Malleable Retractor 2" x 12"	AMB817A
Malleable Retractor 3" x 10"	AMB818
Malleable Retractor 3" x 9"	AMB819
Malleable Retractor 3" x 12"	AMB820
Malleable Retractor 4" x 10"	AMB821
Malleable Retractor 4" x 9"	AMB822
Malleable Retractor 4" x 10"	AMB822A
Malleable Retractor 6" x 12"	AMB823
Malleable Retractor 1/2" x 3"	AMB848



*Balfour Retractors Blades*

<u>DESCRIPTION (Width x Length)</u>	<u>PROD NO.</u>
Balfour Retractor 3" x 4"	AMB724
Balfour Retractor 3 3/8" x 2 3/4"	AMB725
Balfour Retractor 3 3/8" x 1 1/2"	AMB725B
Balfour Retractor 3 3/8" x 4"	AMB725C
Balfour Retractor 4" x 3 3/4"	AMB827
Goulet-Simpson Retractor, Small 1"	AMB867
Goulet-Simpson Retractor, Large 1.5"	AMB868

## SPECIALTY UROLOGICAL RETRACTOR BLADES



<u>DESCRIPTION (Width x Length)</u>	<u>PROD NO.</u>
Yu-Holtgrewe Malleable Retractor w/ Bookwalter Handle 2 1/2" x 7"	AMB840
Carroll Prostate Malleable Blade w/ Bookwalter Handle 1 1/2" x 5"	AMB843
Single Hook Malleable Retractor w/ Ball Probe w/ Simpson Handle	AMB845
Double Hook Malleable Retractor, 8mm, w/ Ball Probe, w/ Simpson Handle	AMB846



Yu-Holtgrewe Retractor



Carroll Prostate Blade

## GENERAL SURGERY & DEEP PELVIC RETRACTORS

<u>DESCRIPTION (Width x Length)</u>	<u>PROD NO.</u>
Gelpi Point Retractor	AMB746
Blade Wylie Vein Retractor 1" x 7"	AMB875
Blade Wylie Vein Retractor 1" x 5"	AMB873
Blade Wylie Vein Retractor 1" x 7" Alum	AMB875RA
St. Mark's Blade 7" with Lip	AMB872



Gelpi Retractor



St. Mark's Blade

## VAGINAL BLADES

<u>DESCRIPTION (Width x Length)</u>	<u>PROD NO.</u>
Posterior Vaginal Retractor 1" X 4 1/2"	AMB925
Lateral Vaginal Retractor 1" X 3"	AMB919



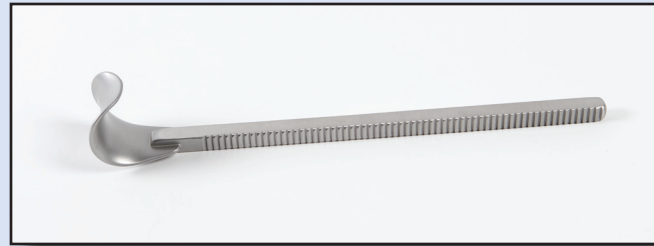
Lateral Vaginal Retractor



[www.artisanmed.com](http://www.artisanmed.com)

## RICHARDSON BLADES

<u>DESCRIPTION (Width x Length)</u>	<u>PROD NO.</u>
Richardson Retractor 1" x 1 1/4"	AMB866
Richardson Retractor 3/4" x 1"	AMB867
Richardson Retractor 3/4" x 2"	AMB868



*Richardson Blade*

## DEAVER RETRACTOR BLADES

<u>DESCRIPTION (Width x Length)</u>	<u>PROD NO.</u>
Deaver Blade Small 1" x 3.5"	AMB921
Deaver Blade Large 1" x 7"	AMB922
Deaver Blade Large 1" x 5"	AMB923
Deaver Blade Large 2" x 5"	AMB924

## RECTAL BLADES

<u>DESCRIPTION (Width x Length)</u>	<u>PROD NO.</u>
Rectal Small Retractor 7/8" x 3 7/8"	AMB12122
Rectal Large Retractor 7/8" x 2 7/8"	AMB72121

## MEYERDING BLADES

<u>DESCRIPTION (Width x Length)</u>	<u>PROD NO.</u>
Meyerding Small Retractor 2/3" x 2 1/3"	AMB12115
Meyerding Med Retractor 1" x 3 1/3"	AMB12116
Meyerding Large Retractor 2" x 3 3/4"	AMB12117
Meyerding (NO Teeth) Small Retractor 2/3" x 2 1/3"	AMB12067

## BIG BOY BLADES

<u>DESCRIPTION (Width x Length)</u>	<u>PROD NO.</u>
Big Boy Retractor 3" x 6 1/2"	AMB12063
Big Boy Retractor 2" x 6 1/2"	AMB12062
Fence Solid Retractor 4" x 5"	AMB12071
Fence Finger Malleable Blade w/ Protected Edge with six 5" Tines	AMB12072



# ARTISAN RETRACTOR SETS

## **ARTISAN RETRACTOR SET**

DESCRIPTION (Width x Length)	PROD NO.
Table Post, 1", Length: 18"	AMB711
Horizontal Flex Bar	AMB741
Horizontal Bar	AMB713
1" Post Coupling	AMB715
Medium Oval Ring (14.5" x 10.5")	AMB717
Segmented Ring (49.5cm x 26.5cm / 19.5" x 10.5")	AMB731
Ratchet Mechanisms (2)	AMB727
Tilt Ratchet Mechanisms (6)	AMB729
2" x 3" Kelly Retractor (2)	AMB721
2" x 4" Kelly Retractor	AMB723
2" x 5" Kelly Retractor	AMB737
2" x 6" Kelly Retractor	AMB739
Balfour Retractor 3 3/8" x 2 3/4"	AMB725
1 1/2" x 6" Malleable Retractor	AMB733
2" x 6" Malleable Retractor (2)	AMB719
3" x 6" Malleable Retractor	AMB735
2 1/2" x 5 1/4" Harrington Retractor	AMB743
Gelpi Retractor	AMB746

## **ARTISAN BARIATRIC RETRACTOR SET**

DESCRIPTION (Width x Length)	PROD NO.
Table Post, 1", Length: 18"	AMB711
Horizontal Flex Bar	AMB741
Horizontal Bar	AMB713
1" Post Coupling	AMB715
Medium Oval Ring (14.5" x 10.5")	AMB717
Vertical Extension Bar, 30.5cm / 12"	AMB747
Malleable Retractor, 2" x 10" w/ Protective Edge	AMB817A
Malleable Retractor, 3" x 10" w/ PE	AMB819
Malleable Retractor, 4" x 10" w/ PE	AMB822A
Kelly Retractor, 2" x 3"	AMB721
Kelly Retractor, 2" x 4"	AMB723
Kelly Retractor, 2" x 8"	AMB836A
Balfour Blade Retractor, 4" x 3 3/4"	AMB827
Harrington Retractor, 3 1/2" x 10"	AMB826A

## **ARTISAN VAGINAL RETRACTOR SET**

DESCRIPTION (Width x Length)	PROD NO.
Vaginal Retractor Ring, 8" x 10.5"	AMB917
Posterior Blade, 1" x 4.5"	AMB925
Lateral Retractor Blade, 1" x 3" (2 per Set)	AMB919
Deaver Blade, Small, 1" x 3.5"	AMB921
Deaver Blade, Large, 1" x 5"	AMB923

## **JORDAN-SIMPSON PERINEAL RETRACTOR SET**

DESCRIPTION (Width x Length)	PROD NO.
Jordan-Simpson Segmented Retractor Ring, Slotted	AMB861
Jordan-Simpson 3 Prong Retractor w/ Rotational Handle (2)	AMB862
Jordan-Simpson 4 Prong Retractor w/ Rotational Handle (2)	AMB863
Jordan-Simpson Right Angled Retractor 1"	AMB864
Jordan-Simpson Right Angled Retractor 1 1/2"	AMB865
Jordan-Simpson Right Angled Retractor 1 x 1 1/2"	AMB866
Goulet-Simpson Retractor, Small 1"	AMB867

## **WALTHER-SIMPSON PERINEAL RETRACTOR SET**

DESCRIPTION (Width x Length)	PROD NO.
Jordan-Simpson Segmented Retractor Ring, Slotted	AMB861
Malleable Retractor, 1" x 4" w/ Protective Edge (2)	AMB810
Malleable Retractor, 1.5" x 4" w/ Protective Edge	AMB805
1 1/2" x 4" Walther-Simpson Notched Retractor	AMB854

## **ARTISAN RECTAL RETRACTOR SET**

DESCRIPTION (Width x Length)	PROD NO.
Rectal Ring, Round 8.5" Diameter, Slotted	AMB881
Fenestrated Rectal Blade, 7cm, angled (4)	AMB882
Solid Rectal Blade, 7cm, Angled, w/Teeth (4)	AMB883





*Artisan Medical • 617 Stokes Road • Suite 4-306 • Medford, NJ 08055  
ph: 866.930.3390 • fax: 609.939.0959*

***[www.artisanmed.com](http://www.artisanmed.com)***  
***[www.artisanmed.com](http://www.artisanmed.com)***

